

Axle and and wheel installation – RSK-1

Instructions including a list of parts and the steps to follow for installing the RSK-1 trailer's axle and wheels.



ROSKI^{MC}

ENGAGEMENT • FIABILITÉ

Axle assembly

Parts

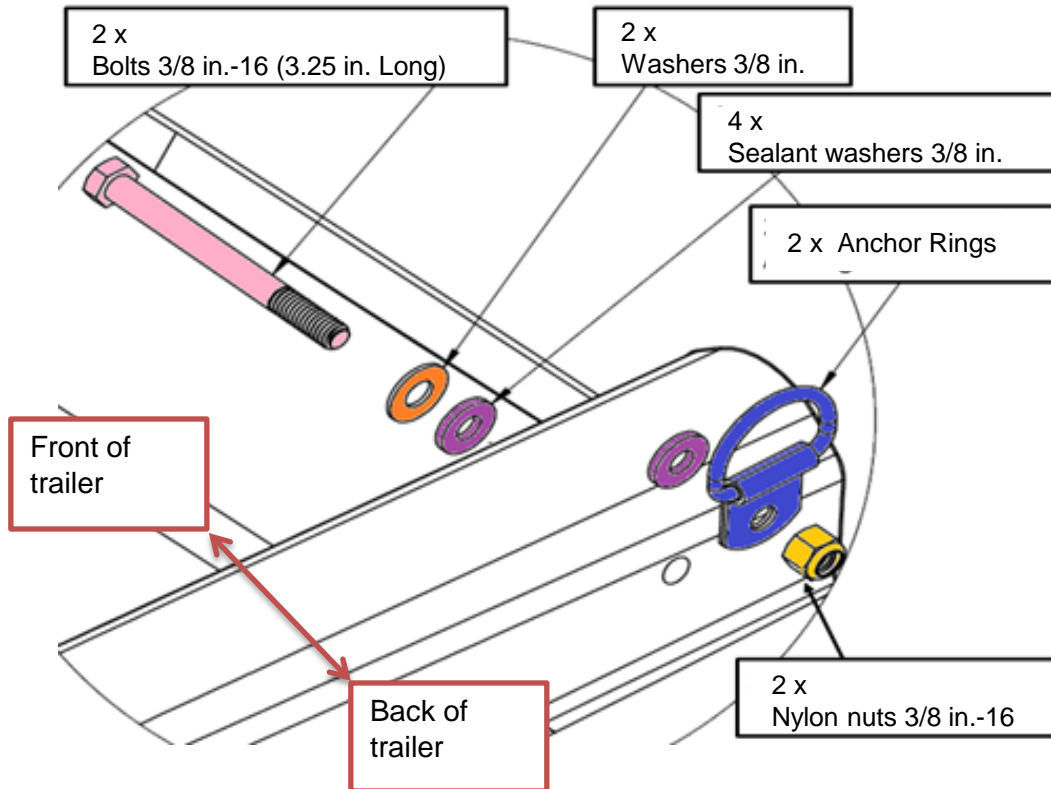


- 1 Axle
- 2 Nylon nuts 3/8 in-16
- 2 bolts 3/8 in-16 (3.25 in long)
- 4 sealing washers 3/8 in
- 2 metal washers 3/8 in
- 2 anchor rings

Axle assembly

Steps for assembling

- Assemble the axle on the trailer using the hardware provided.
- Be careful to place the hardware facing the right direction.



Axle assembly

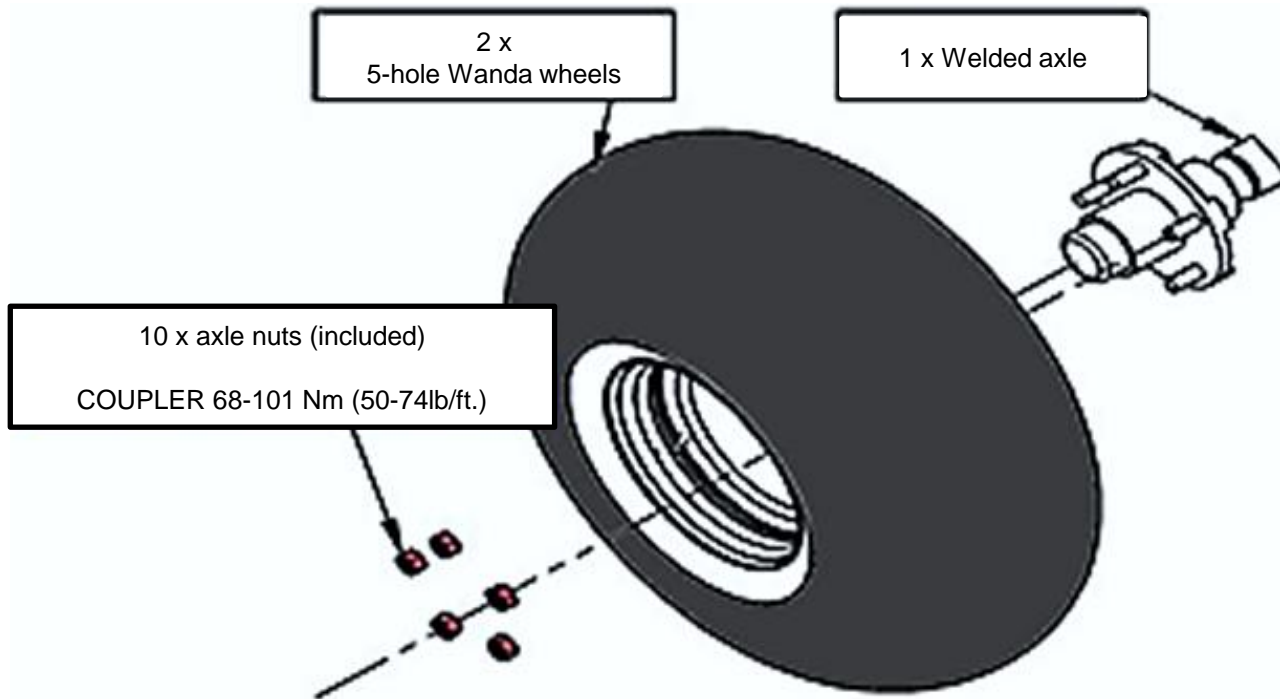
Steps for assembling (cont.)

- Make sure the two anchors are as straight as possible with the grommets facing up.
- Make sure that two threads extend beyond the nut after tightening the bolts.



Wheel installation

Parts



Wheel installation

Steps for installing

- Find the right, and the left wheel:



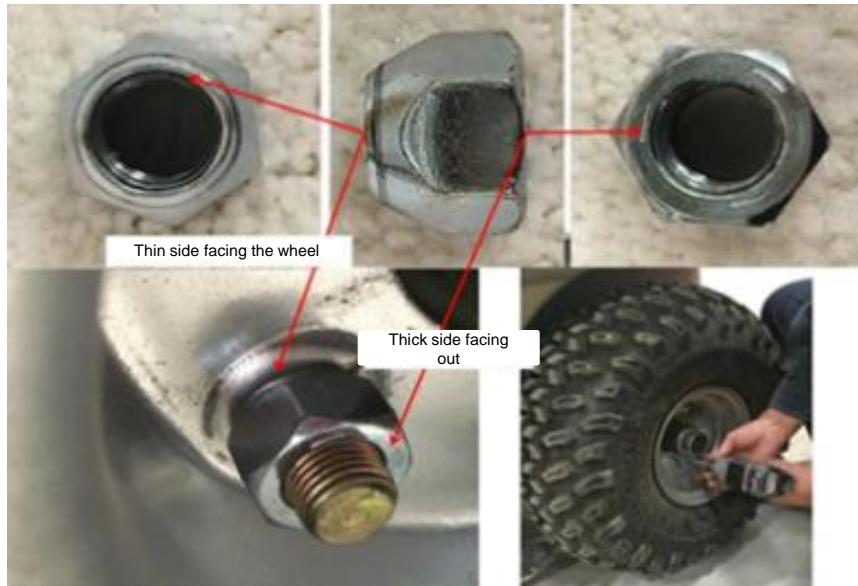
- On the same side as the valve, find the arrow mark on the tire.
- Place each wheel on the side of the trailer such that the arrows are on the top pointing forward.
- Install each wheel on the hub, making sure that the valve is on the outside.



Wheel installation

Steps for installing (cont.)

- Thread the nuts by hand.
- Then tighten the bolts with a drill, being careful not to over tighten them.
- Make sure you place the bolts in the right direction:



Wheel installation

Steps for installing (cont.)

- Place a foam wedge under the wheel.
- Tighten the wheels to 68 Nm - 101 Nm (50 lb/ft - 74 lb/ft).

